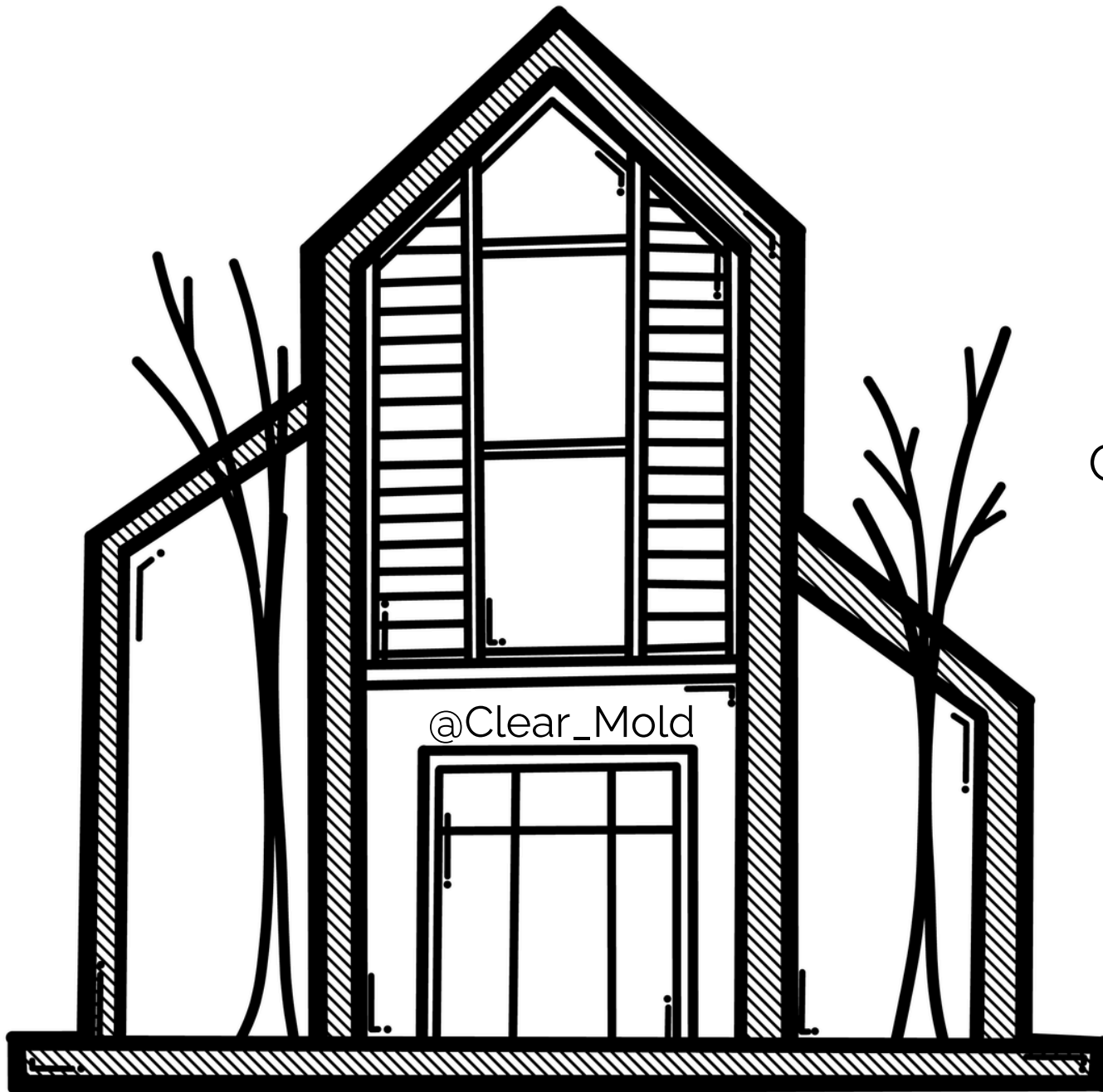


# Roof to Basement

## Areas to investigate:



- Roof Leaks
- A/C Failure & Leaks
- Sealed In Moisture
- Poor Construction
- Low Ventilation
- Leaking Windows
- Plant Soil
- Curtains, Couches, Linens
- High Moisture Areas
- Poor Storage
- EMF
- Floods/Standing Water
- Storms
- Appliances
- Leaking Pipes
- Carpet
- Crawl space/Basement